

# SACEV GENERAL MEETING

**JULY 13<sup>TH</sup>, 2016**





Thanks to our site host  
**Nissan**



Thanks to our meeting  
host



Thanks to Eugen  
Dunlap for Recording





# SACEV GENERAL MEETING



**Jan 13, 2016**

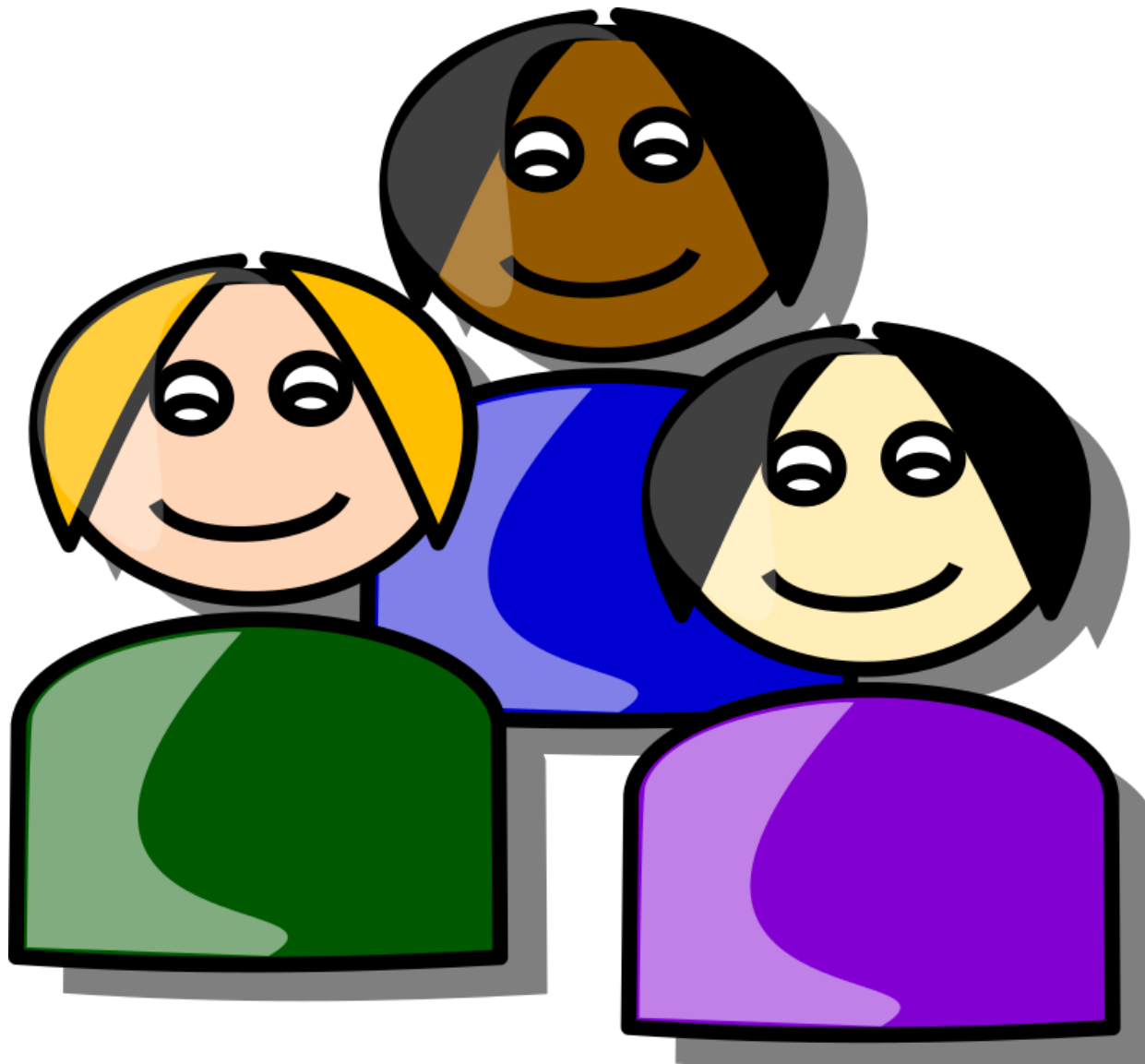
## 6:00 Agenda

- Opening (new members, logistics, leadership)
- Tyson Eckerle, Deputy Director of ZEV Infrastructure, Office of Governor Jerry Brown
- Wade Hughes, SMUD Greenergy Program
- Christopher Cabaldon, West Sacramento Mayor
- Meeting Close

## 7:10 Post Meeting

- Mixer and speaker engagement

# NEW SACEV MEMBERS?



~ 9,000 Regional EV Drivers

Each Year\*:

- 90M e-miles per year
- 48,000 gallons of water
- Nearly 4M gas gallons
- Save over \$8½ million
- Equivalent to:
  - 400 Gas Tanker Trucks
  - 173 Rail Oil Cars



**Membership: 566**

**Two Board Positions for  
upcoming election**

**Now Includes Truckee / Tahoe**



**President (George Parrott)**

- Chapter Responsibility
- Directs General Meetings
- Leads Board Meetings
- Leads Funding Searches / Grants
- Coordinates Speakers Bureau
- Co-signs Treasurer Actions

**Chief Operating Officer (Guy Hall)**

- Coordinates Partnerships
- Maintains Calendar
- Long Term Vision / Strategy

Deputy Director of ZEV  
Infrastructure at California,

Governor's Office of  
Business and Economic  
Development





Mayor of  
West  
Sacramento





# SacEV Meeting

Wade Hughes – Program Manager

July 13, 2016

Powering forward. Together.



# About SMUD



- 610,000 customers
- 1.4 million population
- \$1.4 billion in revenues
- 900 mi<sup>2</sup>, 2331 km<sup>2</sup> service territory
- 7 member, elected Board of Directors
- Not-for-Profit Utility
- 2nd largest muni in California, 6th largest in the US
- 3299 MW peak load
- 2073 employees

# Questions to answer

- What is our Address?
- Can we really impact our environment?
- What is SMUD doing about our environment?
- What's Next for Greenergy?



# What is our Address?

This is the galactic Address  
we've been given.

There is no away!

The poorest populations  
are most effected by  
climate.

If it is Good we ought to  
treat it that way.

Developed countries  
will demonstrate the way.



# Can People effect the environment?

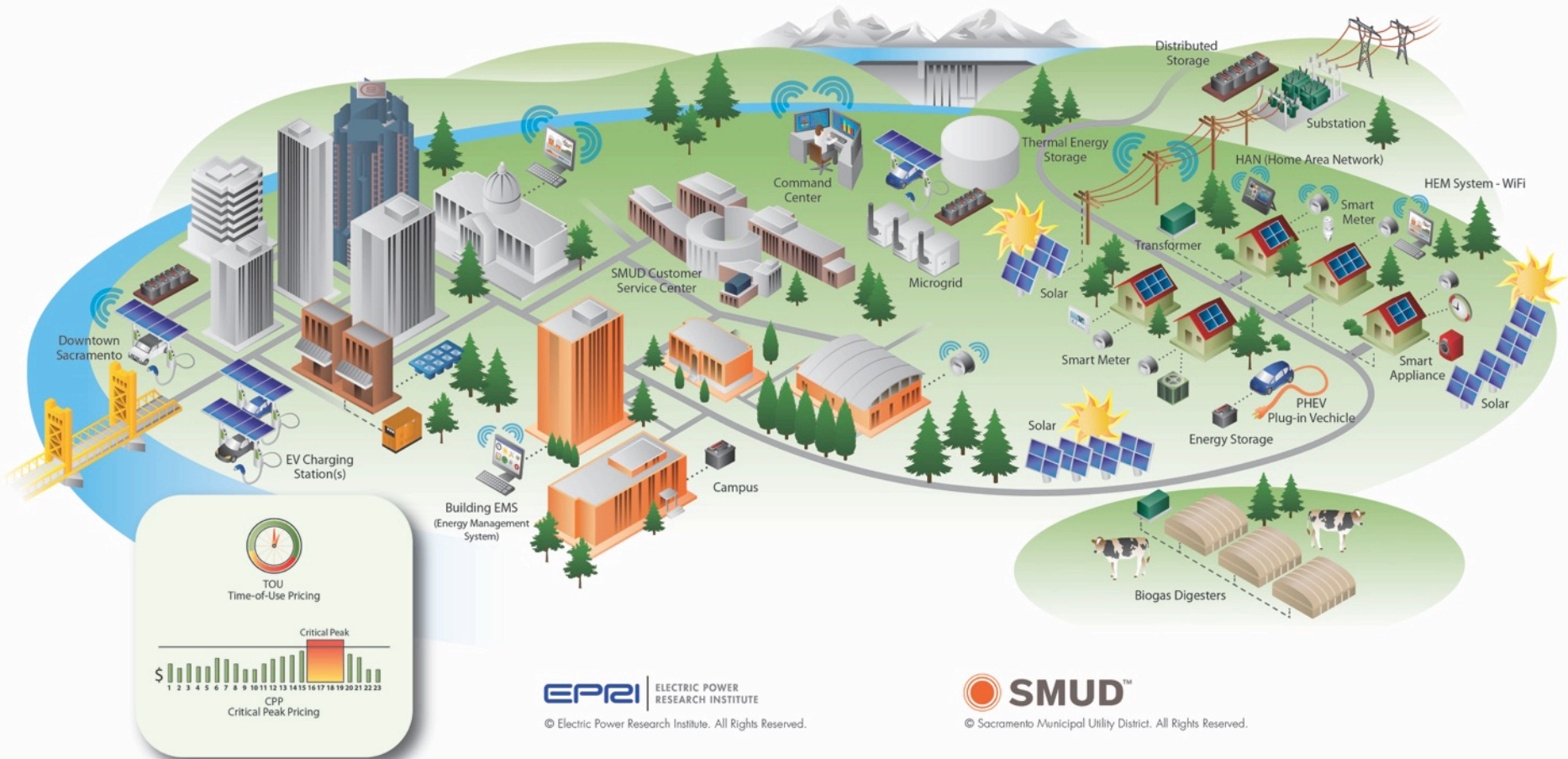


MacArthur Maze Oakland California

**SMUD**<sup>®</sup>



# What is SMUD Doing?



## Smart Grid Vision



# What is SMUD Doing?



Smart Grid Vision



# Flagship Environmental Program

## GREENERGY

Participant's pay a little more to offset their usage with renewable power.

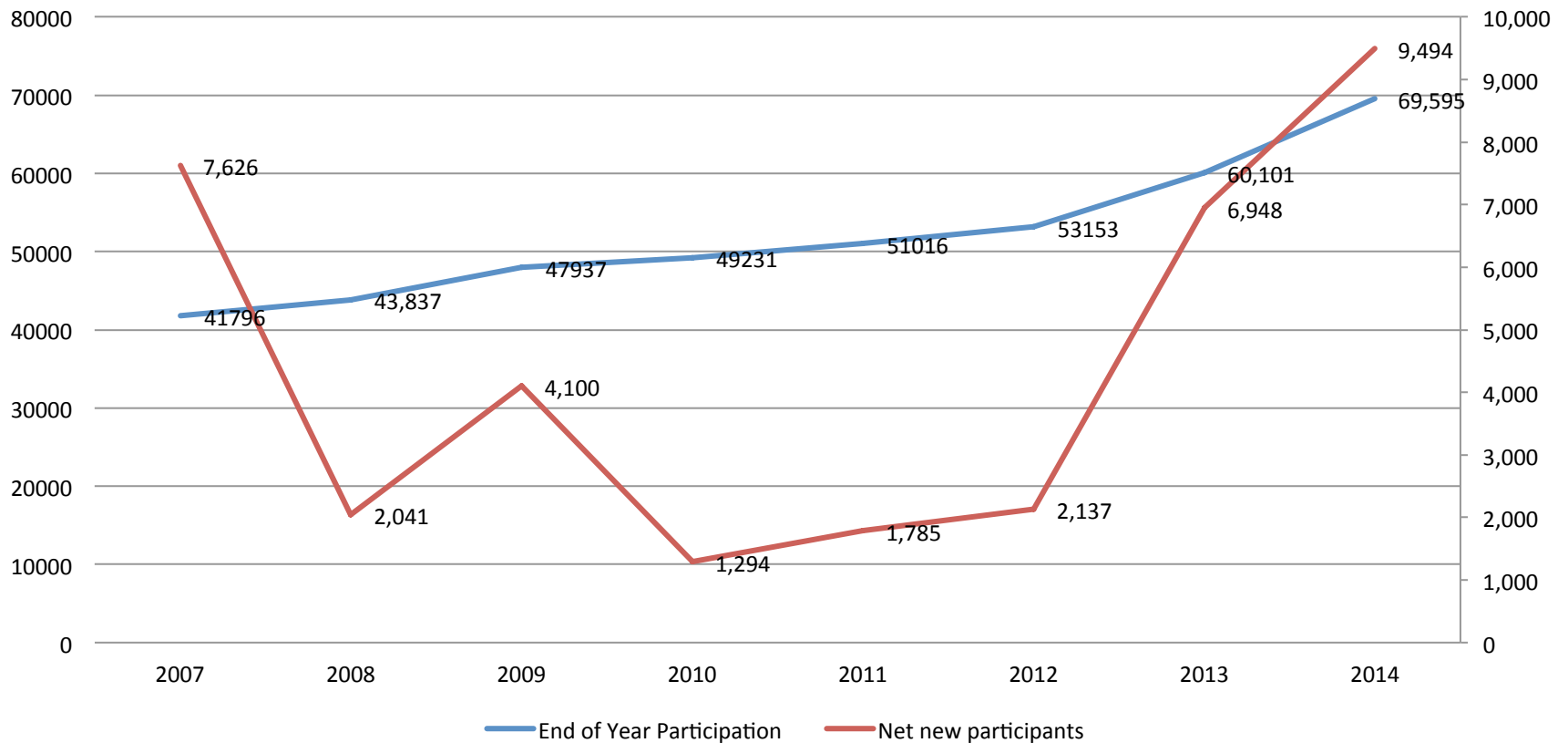
- Initiated in 1997
  - One of the first Utility Green Pricing programs in the nation
- Residential Greenergy
  - **50% level** where SMUD offsets half of your usage for \$3
  - **100% level** where SMUD offsets all of your usage for \$6
- Commercial Greenergy
  - **New Partner level**- For \$5 we offset 1 Mwh with renewables
  - **Partner Plus level**- For \$10 we offset 1 Mwh with renewables plus marketing package
- Center for Resource Solutions (CRS) Green-e certified

# GREENERGY

- Perennial top 10 Green Pricing program
  - Number 4 in nation for energy sales (NREL)
- About 74,000 Participants
  - Residential 72,000, and Commercial 1,900
- 11% of all eligible candidates participate
  - Residential 14%, and Commercial 3%
- 629,200 MWh offset in 2015 (Average home uses 9 MWhs per year)
  - 4.3% of SMUD electric sales

# Residential Greenenergy

## Residential Greenenergy Growth Over Time



# What's Next for Greenergy

- Escalating Participation
  - More strategic advertising, better product refinement, marketing to benefit participants
- Greater Participant Engagement
  - News letter, crowd sourcing, mobile couponing, referring efforts, more entitlements
- More Local Projects
  - More regional renewable generation

Charge  
**FREE**  
for a year!



## Plug in and **Save**

SMUD's \$300 rebate for the purchase or lease of a new plug-in electric vehicle more than covers the average cost to charge for a year.

To learn more about SMUD's electric vehicle discount or to apply for your rebate, go to **smud.org/pev**.



**SMUD**

Powering forward.  
Together.

©SMUD 0225-16 3/16

- New Vehicles only
- Lease or purchase
- BEV or PHEV



# Contact Information, Discussion and Questions





Thanks to our site host  
Nissan



Thanks to our meeting  
host



Thanks to Eugen  
Dunlap for Recording





# 10

# Minutes

# 5

# Minutes

# 4

# Minutes

3

Minutes

# 2

# Minutes

1

Minute

**30**  
**Seconds**



0